

### STUDENT SPOTLIGHT

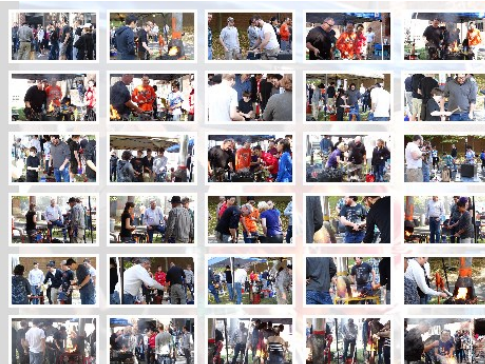
**Jessie Liu '16**  
Mechanical and Aerospace Engineering



Jessie Liu is a senior in the Mechanical and Aerospace Engineering department from Eugene, Oregon. She is performing her senior thesis in Professor Clancy Rowley's lab modeling the bodies of fish, controlling parameters such as stiffness and density. Her work will eventually be used for simulations of fish swimming for optimal control systems. Jessie is also currently enrolled in the VIS418/CEE418 Extraordinary Processes class, exploring the material and aesthetic properties of ash wood in order to find new applications for ash wood which is mainly used for firewood. When she's not working in the Equad, Jessie can be found pursuing hobbies like rock climbing, photography, and graphic design.

### NEWS

**PRISM 4th annual blacksmithing and metallurgy event << photos >>**



### AWARDS



PRISM faculty member Emily Carter awarded Joseph O. Hirschfelder Prize in Theoretical Chemistry << more >>



PRISM faculty member & PCCM director Yazdani inducted to the American Academy of Arts and Sciences << more >>



PRISM faculty member Debenedetti and PRISM/PCCM education outreach director Steinberg named APS Fellows << more >>

NOVEMBER 2015 ISSUE

### SEMINAR SERIES

**November 11**

[Model Structures for C-A-S-H\(I\)](#)

Ian Richardson  
University of Leeds

**November 18**

[Nanostructured Composite Electrodes for Energy Storage Devices](#)

Gleb Yushin  
Georgia Institute of Technology

**December 2**

[The Unconventional Science and Engineering of Gas Shale](#)

Franz-Josef Ulm  
Massachusetts Institute of Technology

**December 9**

[Multi-functional Organic Electronics through Conjugated Block Copolymers](#)

Rafael Verduzco  
Rice University

**December 16**

[Engineering New Materials from Old Materials](#)

Cory Dean  
Columbia University

